

ADHESIVE BOND TENSILE FIXTURES

according to GOST 14760-69, ASTM-D897, GOST 209-75-A

Item no.: THS832-D40

according to **GOST 14760-69**

Max. load: 20 kN

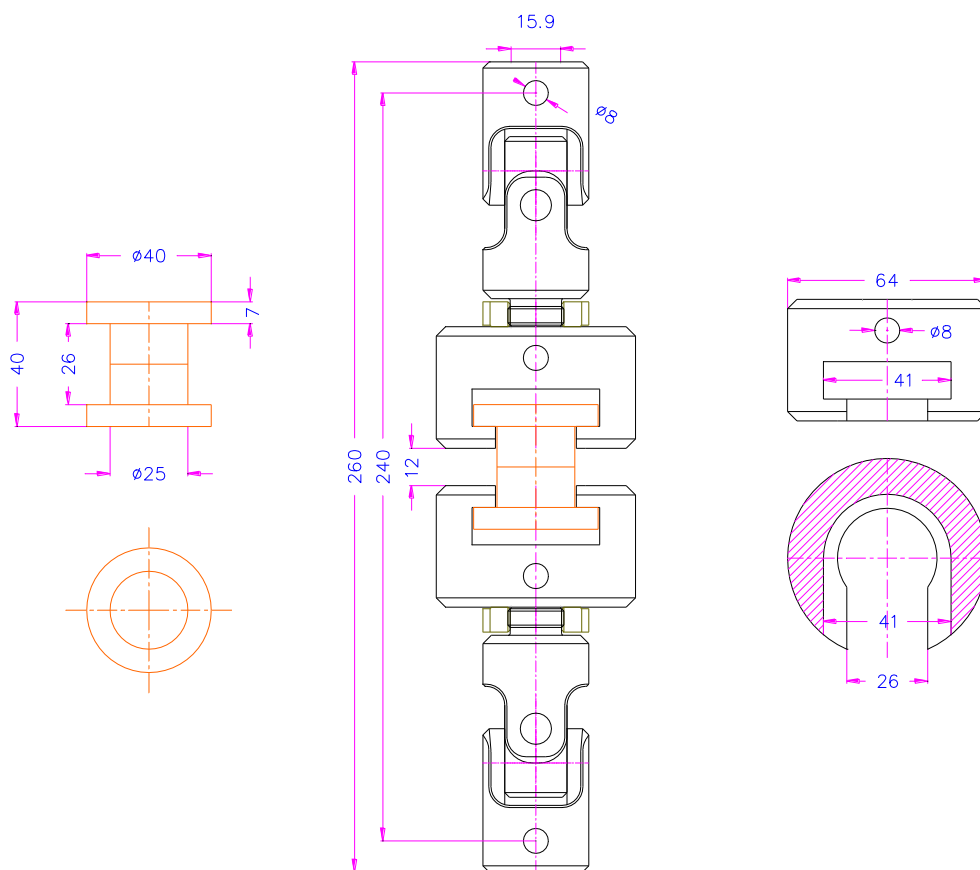
Coupling: Af159 or Af20. Further couplings on request

Material: Steel, nickel-plated

Temperature range: 0 ... +70°C
Further temperature ranges on request

Weight: 2.31 kg per pair of fixtures
incl. 2x Af159 universal joint adapters

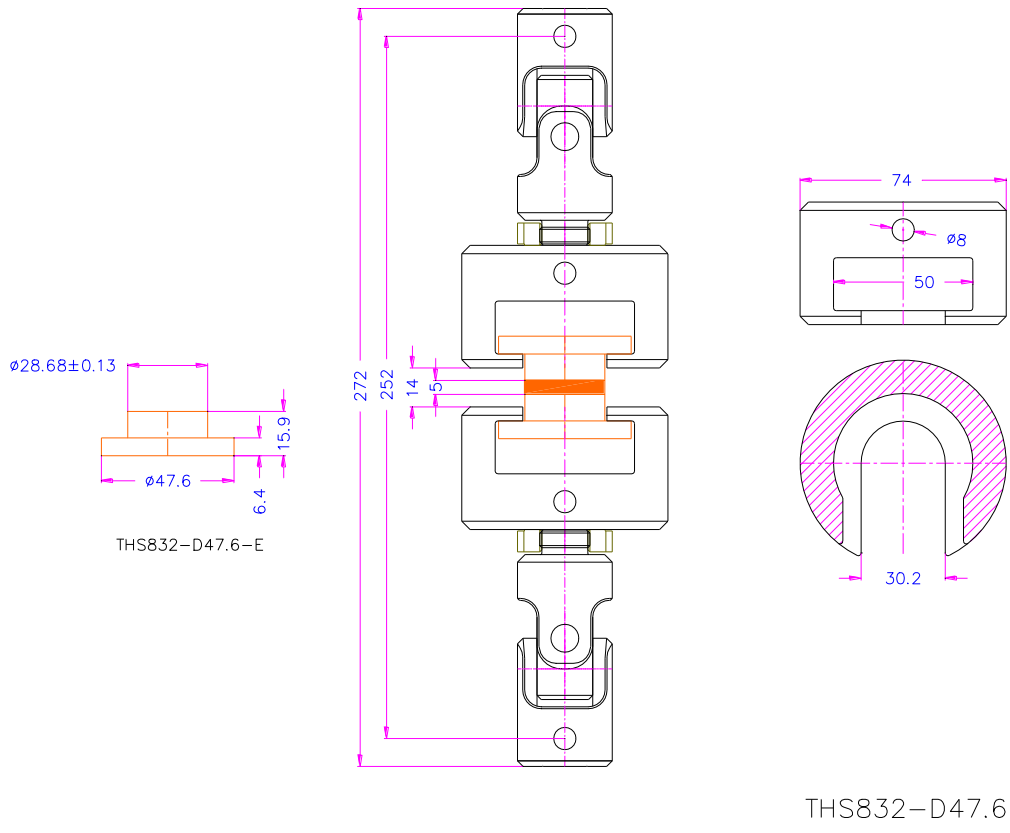
Scope of supply: 1 pair of fixtures incl. 2x Af159 universal joint adapters.
Inserts need to be ordered separately (item no.: THS832-D40-E).



THS832-D40

Examples for further solutions:

Testing adhesive bond strength according to **ASTM-D897-Fig.1,2**
 Fixture item no.: THS832-D47.6
 Insert item no.: THS832-D47.6-E



Measuring metal bond strength at tearing of rubber and glue according to **GOST 209-75-A**
 Fixture item no.: THS832-D35
 Insert item no.: THS832-D35-E

