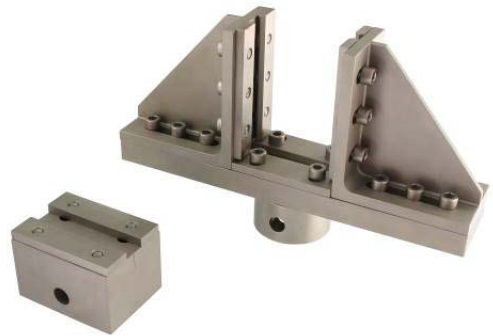


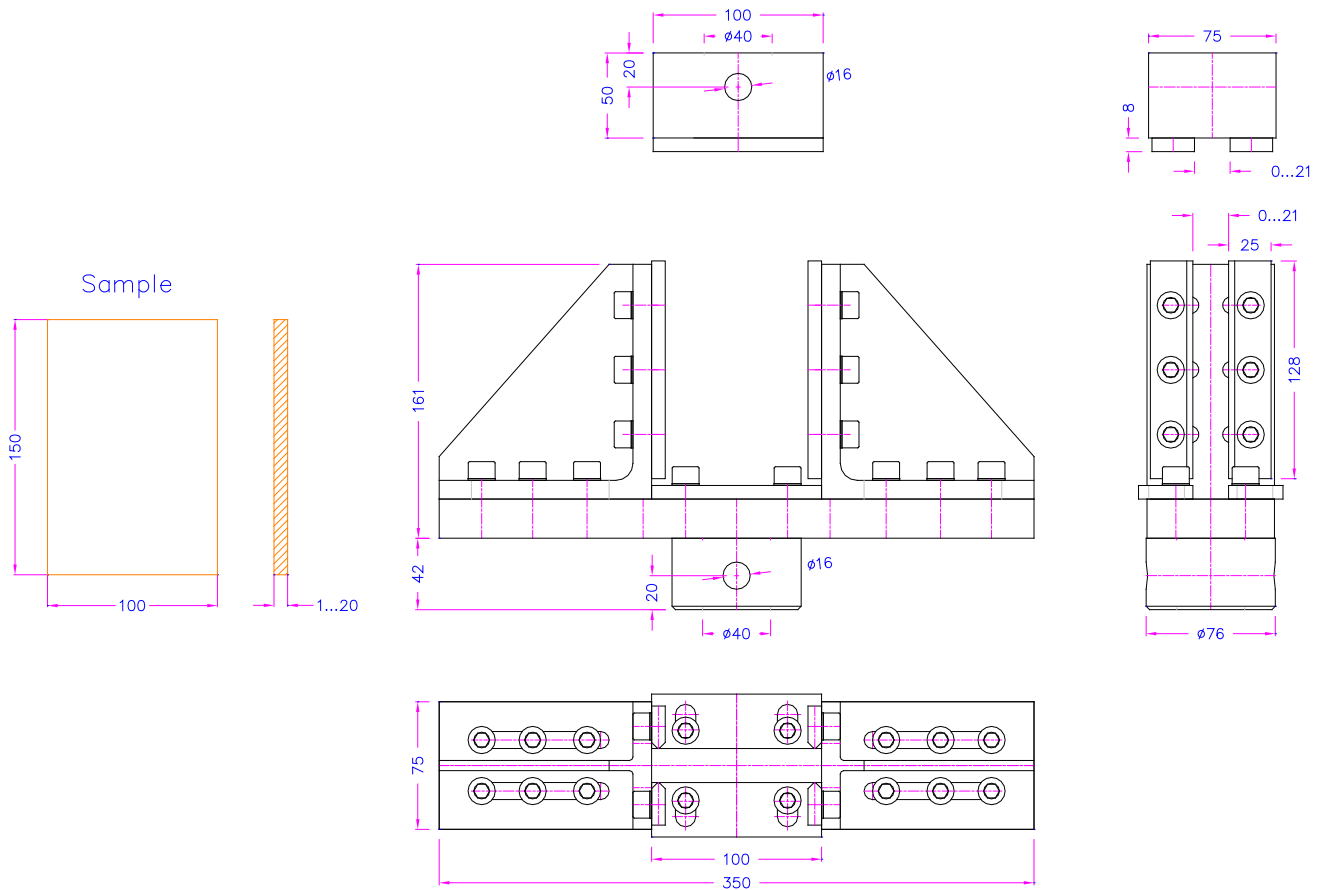
**RESIDUAL STRENGTH COMPRESSION TEST FIXTURES**

for composite plates according to ASTM-D7137, AITM-0010, BBS7260, ASTM-D7136, DIN65561, ISO18352.

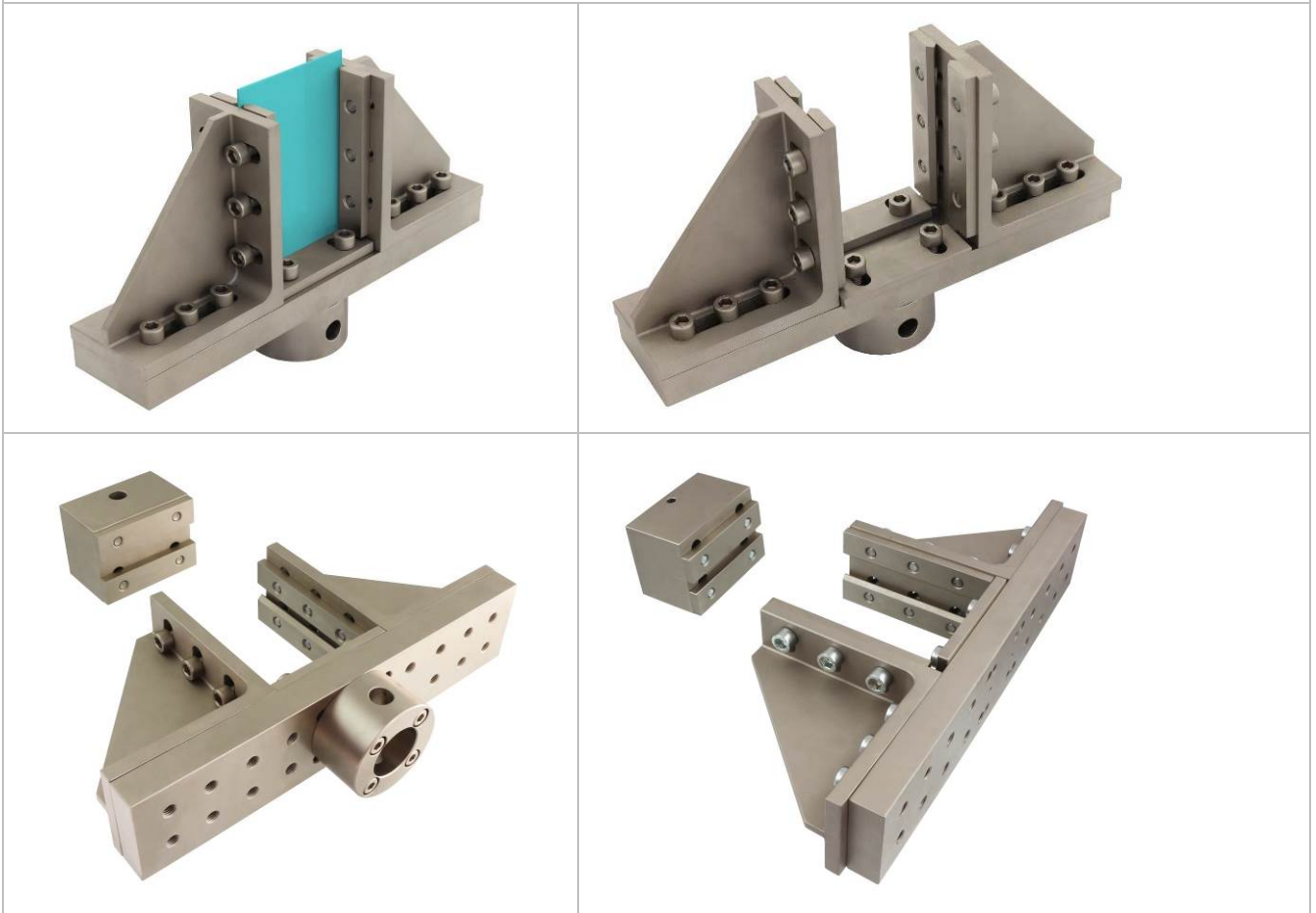
|                    |   |
|--------------------|---|
| <b>Item no.:</b>   | <b>THS818-30</b><br>according to ASTM-D7137, AITM-0010  |
| Max. load:         | 100 kN  |
| Coupling:          | Max. Af40<br>Further coupling sizes on request          |
| Material:          | Steel, nickel-plated                                    |
| Temperature range: | -20 ... +200°C<br>Further temperature ranges on request |
| Weight:            | 13,55 kg per fixture                                    |
| Scope of supply:   | 1 fixture   |



^

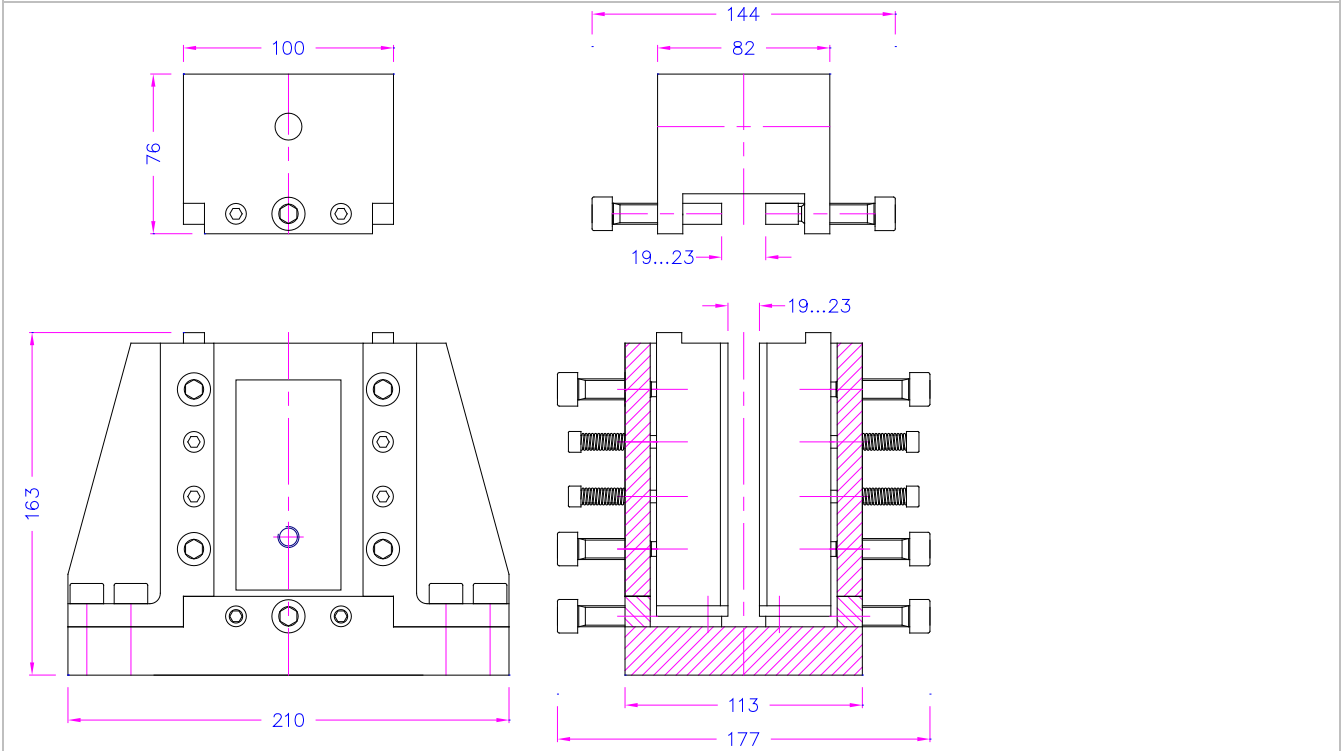


THS818-30

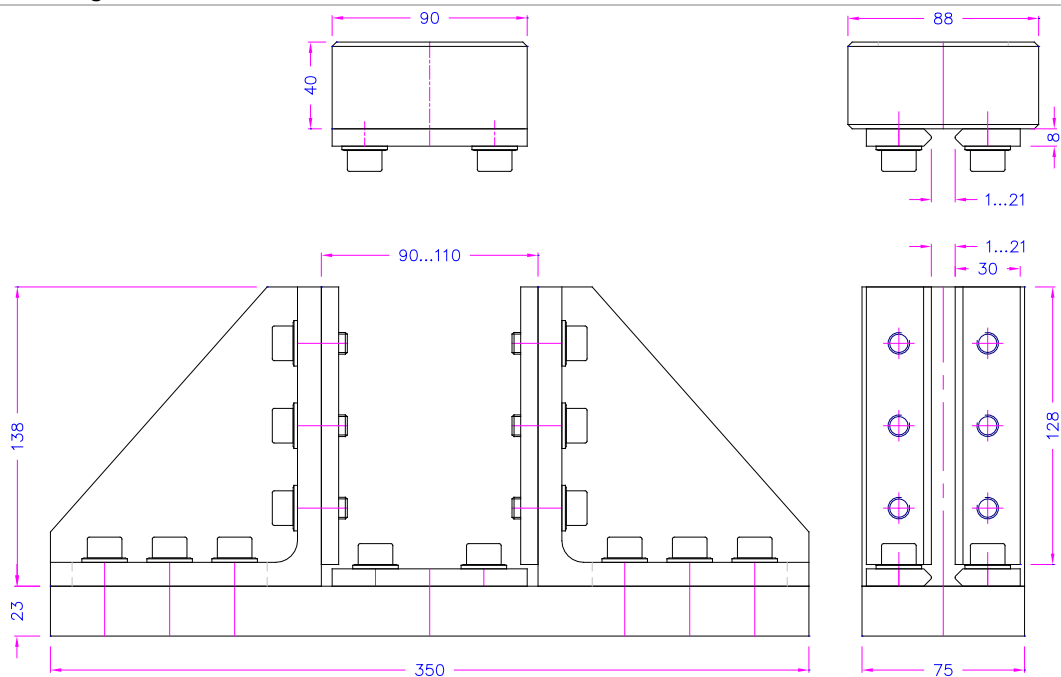


Further versions:

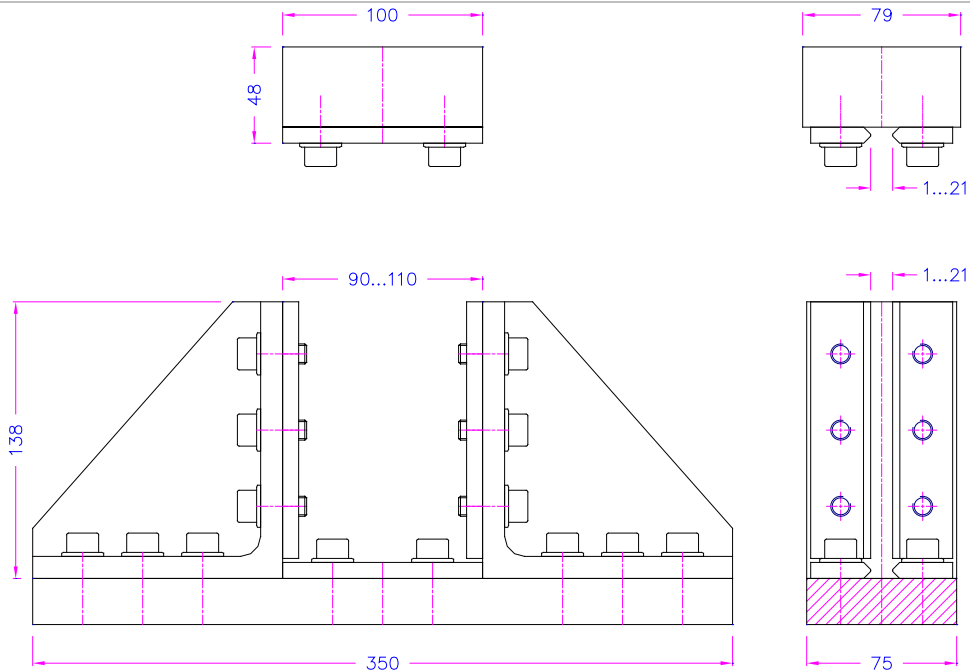
THS818-40  
according to BBS7260



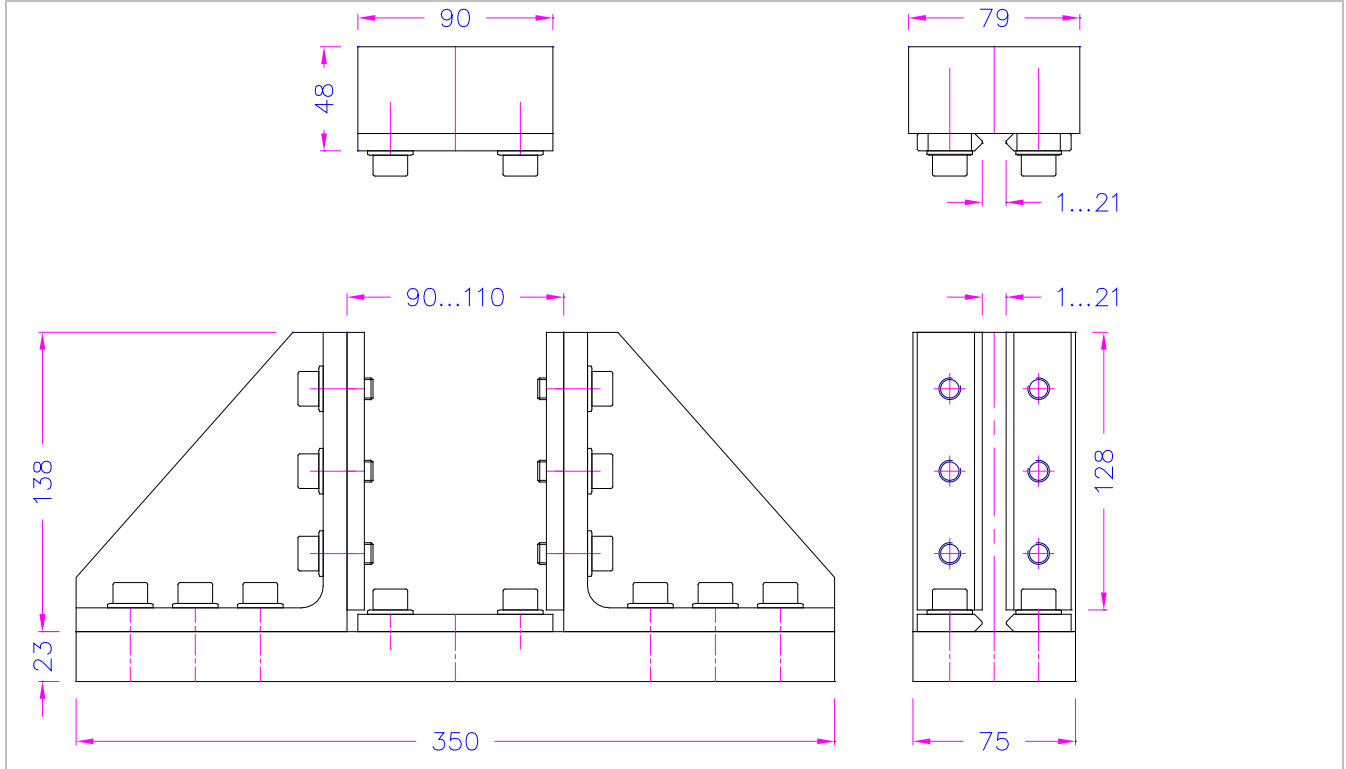
**THS818-50**  
according to ASTM-D7137, ASTM-D7136, DIN65561



**THS818-60**  
similar to AITM-0010



THS818-70  
according to DIN ISO18352



03.09.202001