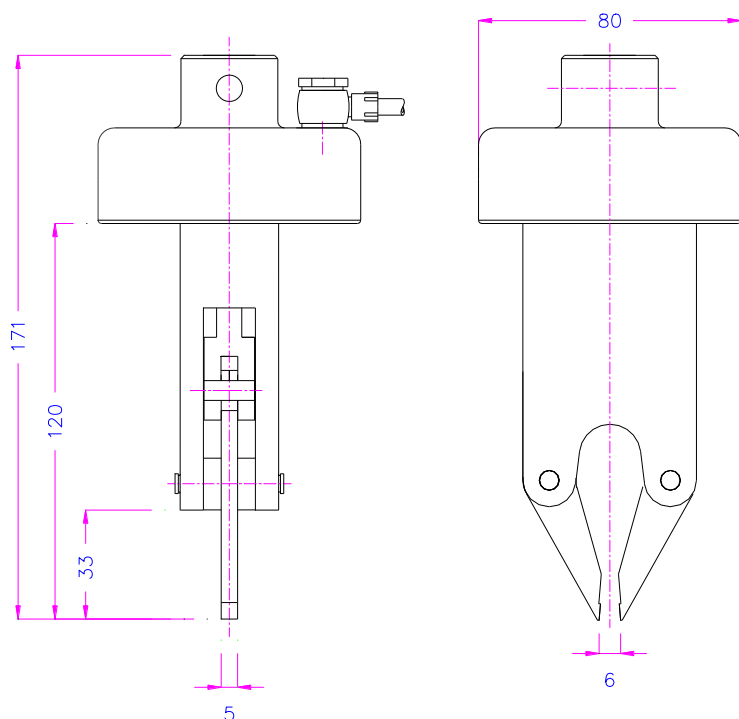


PNEUMATIC PINCER GRIP

Item no.	THS501
Tensile force:	1 kN
Clamping force:	2 kN (horizontal) at 7 bar
Opening:	0 - 6 mm
Temperature range:	0° ... +70°C Further temperature ranges on request
Body:	Aluminum, anodized
Pneumatic connection:	1/8" internal thread
Weight:	0.8 kg per grip (incl. jaws)
Scope of delivery:	1 grip without jaws



Jaws for THS501

1 set = 1 pair of jaws

Item no.:	Clamping surface:	Surface:	Opening:
THS501-B	5x5 mm	Blank jaws	0-6 mm
THS501-BP	5x5 mm	Pyramid (serrated) jaws	0-6 mm
THS501-BD	5x5 mm	Diamond-coated jaws	0-6 mm

Insert jaws for THS501:

THS501-GT	Carrier for insert jaws		
THS501-EB10	10x10 mm	Blank insert jaws	0-8 mm
THS501-EBP10	10x10 mm	Pyramid insert jaws	0-8 mm
THS501-EB15	15x15 mm	Blank insert jaws	0-8 mm
THS501-EBP15	15x15 mm	Pyramid insert jaws	0-8 mm



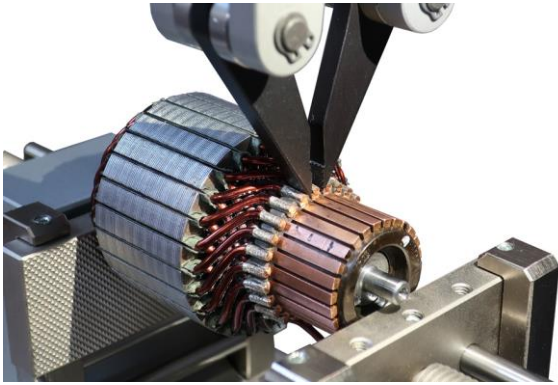
Blank jaws



Pyramids 0.3x45°



Diamond jaws



THS501+BP + TH240g-S100+BP80
Solder joint test



THS501+BP-TiN
Jaws with titan nitride coating

Video:

Adjustable opening



<https://youtu.be/z2hBnwehBfQ>

Similar grips:



[THS341](#)



[THS7-10](#)



[THS205k](#)



[THS470](#)

Pneumatic accessories:**TH205-1 Foot pedals**

None locking: The jaws of the grip open by pressing the foot pedal and close after removing the foot from the pedal.
Scope of delivery: 1 pair of foot switches including tubes and fittings

**TH205-2 Foot pedals**

With locking function: The jaws of the grip open by pressing the foot pedal and remain opened after removing the foot from the pedal. The jaws close by pressing the pedal one more time.
Scope of delivery: 1 pair of foot switches including tubes and fittings

**TH205-PR16bar Pressure regulator**

Optional for TH205-1 or TH205-2
To adjust air pressure: 1-16 bar

**TH205-4-1/8" Pneumatic micro-hand switches**

Pneumatic micro – hand switches with 1/8" connection, tubes and fittings
With locking function: The hand switches are directly installed at the grips, 3/2 directional valve. Only for single action rods with spring inside.
Scope of supply: 2 hand switches including tubes and fittings

**TH205-3 Hand switches**

With locking function: The jaws of the grip close by pulling the handle and remain closed. The jaws open by pushing the handle back.
Scope of delivery: 1 unit of hand switches including tubes and fittings

**TH216 Silent compressor for laboratories, oil-lubricated, with pressure reducer**

Max pressure 16 bar; 230 V/50 HZ; noise level: 38 dB(A)
Motor: 0.13 kW; displacement: 17 l/min; tank size 3.5 l
Dimensions: 340x290x340 mm (L x W x H); weight 18 kg