

## RIBBON GRIP

to test thin narrow webbing, straps and ribbons.  
The sample is wrapped around a self-tightening roller  
to minimize its slippage.

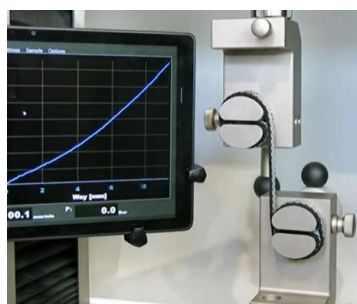
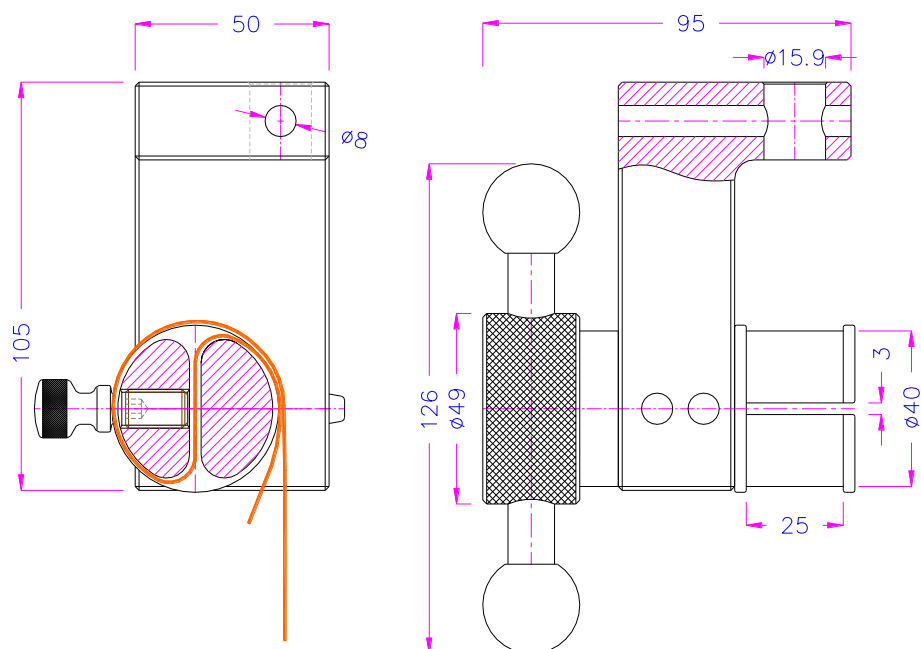
<b>Item no.:</b>	<b>TH252-40x25-10kN / -20kN</b>
Max. load:	10 kN / 20 kN
Max. sample thickness:	2.5 mm (0.098 in)
Max. sample width:	25 mm (0.98 in)
Min. sample length:	550 mm (21.7 in)
Coupling:	Af159 or Af20 Further couplings on request
Body:	Anodized aluminium (10 kN version) Steel, nickel-plated (20 kN version)
Roller:	40 mm (1.57 in) Ø; steel, nickel-plated
Temperature range:	0 ... +70°C Further temperature ranges on request
Weight per grip:	1.2 kg (10 kN Version) 2.6 kg (20 kN Version)
Scope of delivery:	1 pair of grips



10 kN Version



20 kN Version



### Video

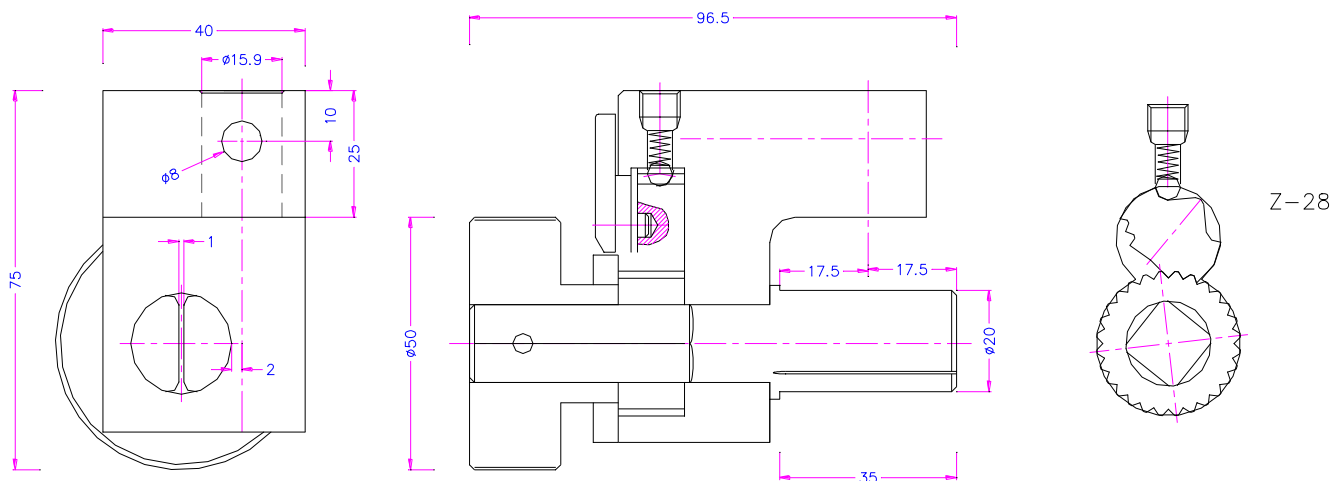
**TH252-40x25-20kN-Af159 Steel version**

[https://www.youtube.com/watch?v=k5\\_2Oud97gc](https://www.youtube.com/watch?v=k5_2Oud97gc)

Ribbon 14x3 mm

Ribbon grip with ratchet mechanism to test thin ribbons

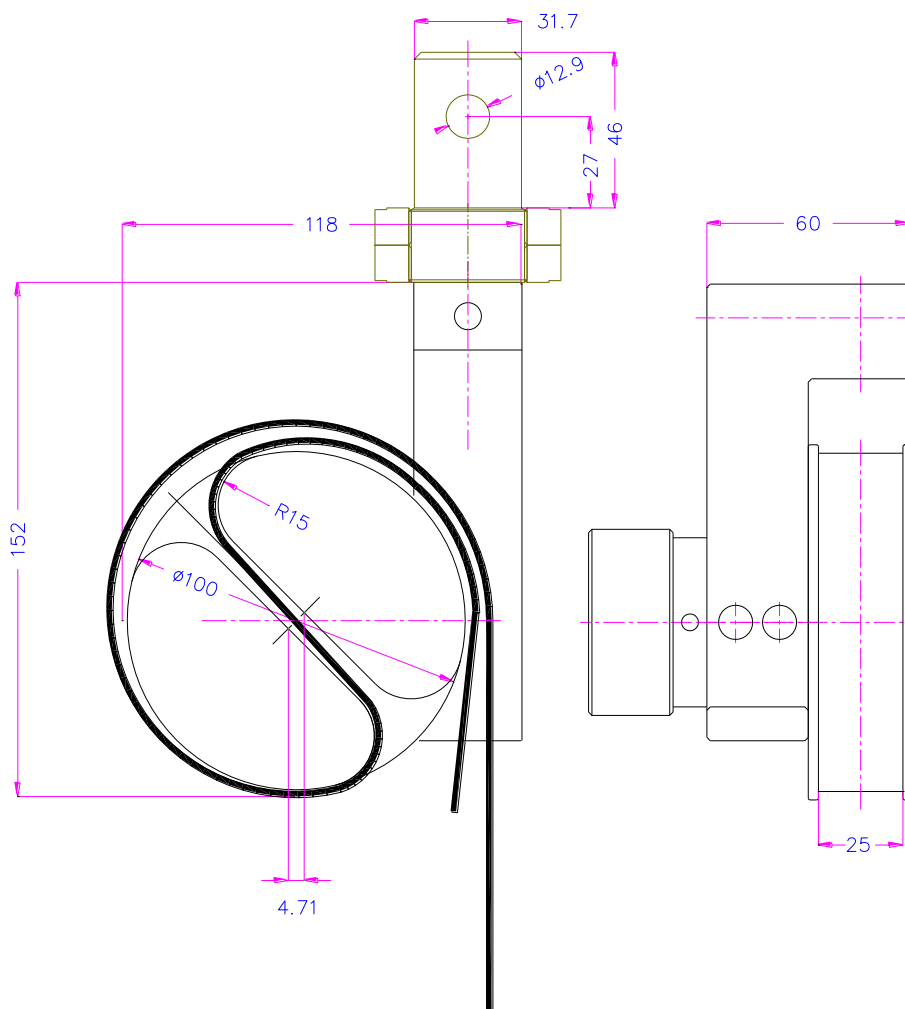
<b>Item no.:</b>	<b>TH252-20x35-RTCH-5kN</b>
Max. load:	5 kN
Max. sample thickness:	1 mm (0.039 in)
Max. sample width:	35 mm (1.38 in)
Min. sample length:	300 mm (11.8 in)
Roller Ø:	20 mm (0.78 in)
Number of ratchet teeth:	28
Coupling:	Af159 or Af20 Further couplings on request
Body:	Anodized aluminium
Ratchet, roller and handle:	Steel, nickel-plated
Temperature range:	0 ... +70°C Further temperature ranges on request
Weight:	Ca. 0.8 kg per grip
Scope of delivery:	1 pair of grips

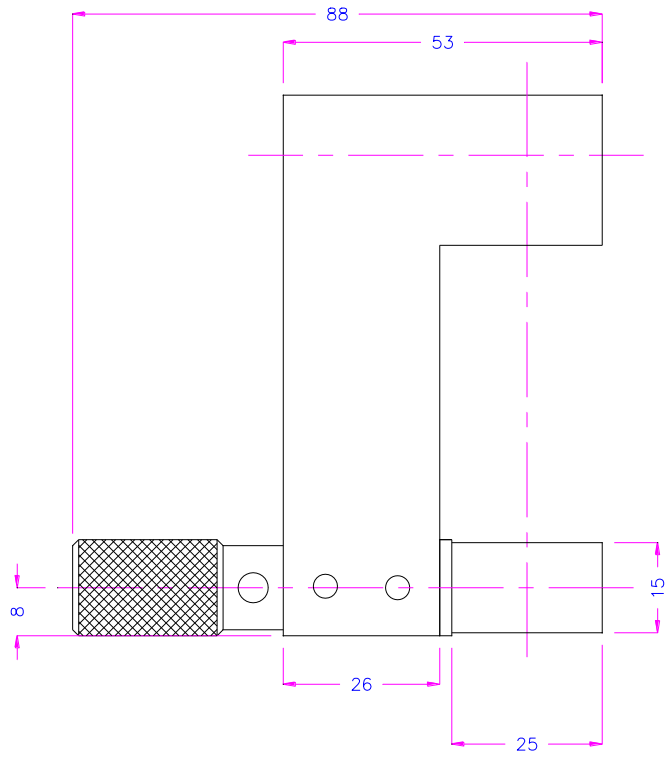
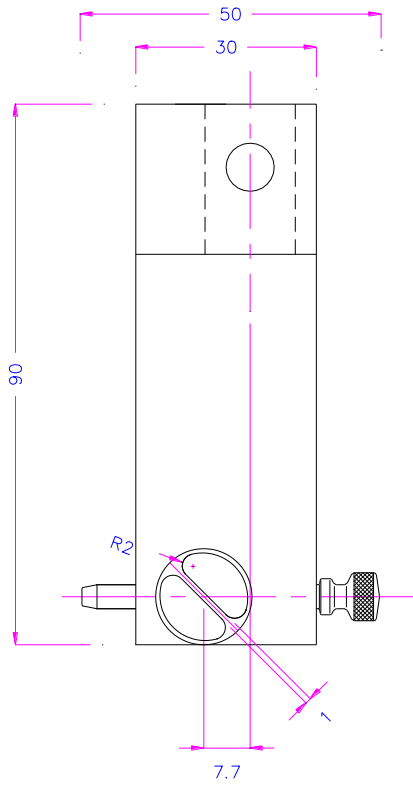


	<p>Video  <b>How to insert a sample</b>  <a href="https://youtu.be/RnHQ_Zozp5I">https://youtu.be/RnHQ_Zozp5I</a></p>
--	--

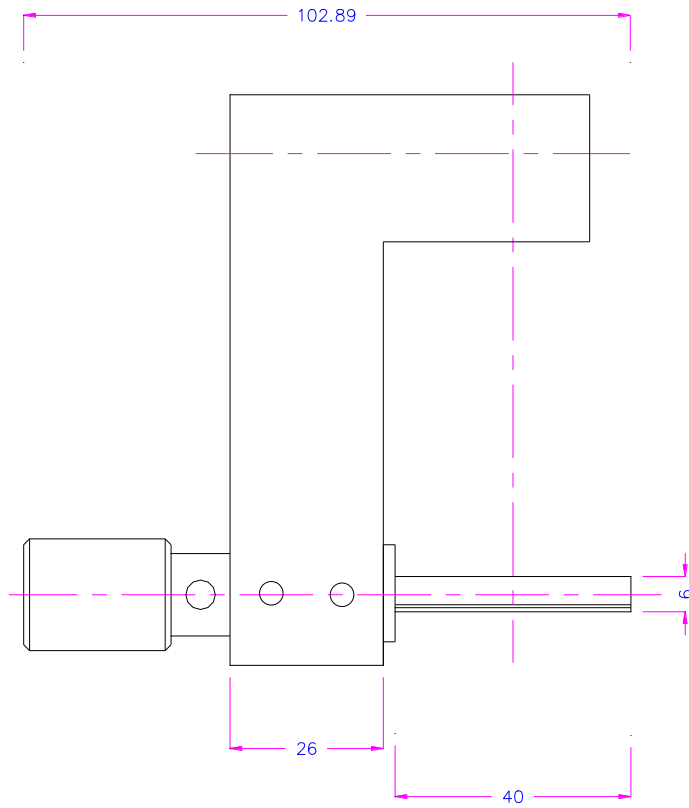
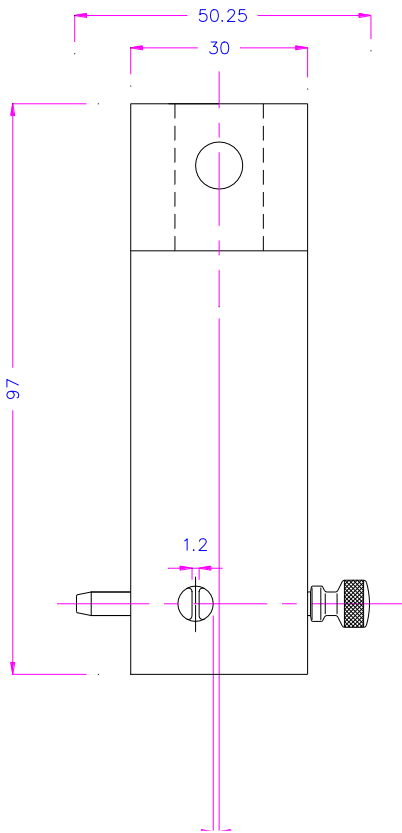
**Customized solutions:**

<b>Item no.:</b>	<b>TH252-100x25-20kN</b>
Max. load:	20 kN
Max. sample thickness:	4 mm (0.16 in)
Max. sample width:	25 mm (0.98 in)
Min. sample length:	1300 mm
Roller Ø:	100 mm (3.94 in)
Coupling:	Am 317 Further couplings on request
Body:	Steel, manganese phosphated
Temperature range:	0 ... +70°C Further temperature ranges on request
Weight:	6 kg per grip
Scope of delivery:	1 pair of grips





TH252-15x25-H8



TH252-6X40  
1 kN

Test videos:



**TH252 Videos**

<http://youtu.be/Cxrxt59rWrw>

blue ribbon 8 kN

<http://youtu.be/Koi3Q4OUOtU>

<https://youtu.be/QVviRKLE014>

insert

<https://youtu.be/ZkpwEuGVmO4>

[https://youtu.be/k5\\_2Oud97qc](https://youtu.be/k5_2Oud97qc)

TH252-40x25-20kN-Af159  
14 kN



**TH252-20x35-RTCH-5kN**

<http://youtu.be/AiLxrAHdKX4>